

Programmable Center Knife Gauge Set

Set-in pockets

- Pocketed knit jackets
- Sweatpants
- Pockets for placket shirts
- Pockets on knit shorts
- Most industrial two needle lockstitch sewing machines

DESCRIPTION

A retrofit gauge set with movable center knife to facilitate the cutting of pocket opening in panel and pocketing material. The knife begins to cut in front of sewing stitches and moves to the rear of the needles during the sew cycle. This differential in sew length versus cut length may be changed as desired.

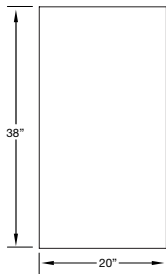
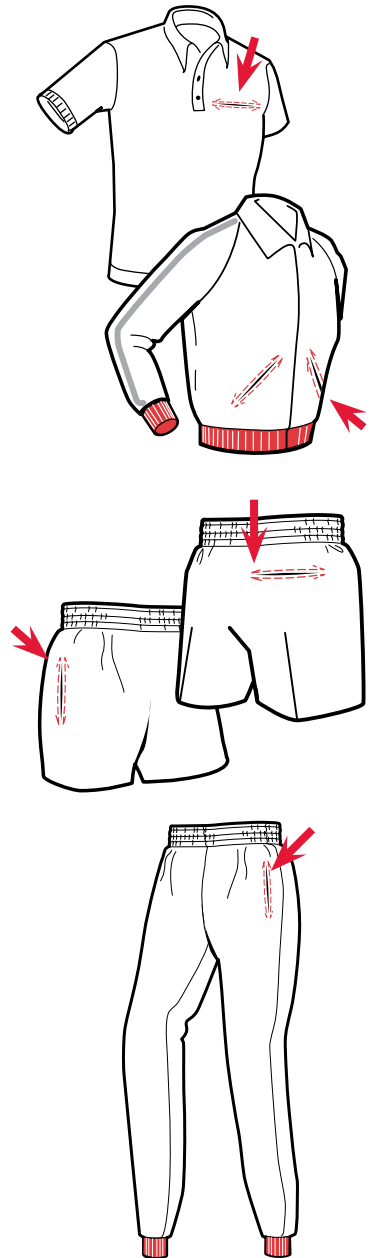
OPERATION

The operator places garment panel and pocketing material under presser foot, presses sewing treadle to begin sew cycle. The knife automatically shifts to the rear position after the beginning backtack is completed. The knife is reset to the front position upon completion of the finished sew cycle, thread trim and foot-lift. A machine equipped with stitch count capability will allow the operator to press the treadle once to complete the cycle automatically.

OPTIONS

Needle Gaps: 9/16" - 3/8" - 1/4"

Images may include options.



Footprint

SPECIFICATIONS

Voltage (v/ph/hz)	220v 1ph
Current (amps)	5
Air pressure (psi)	90
Air consumption (cfm)	2
PRODUCTION	
Shorts per hour	210
Pants per hour	185

Depending on material and size of parts

www.atlatt.com • sales@atlatt.com



Atlanta Attachment Company

The Company that
Sudden Service
built