

Images may include options.

## Electronic Metering

### Upper or Lower Metering System

- Easy digital setting
- Non-slip metering head
- Available for all machines
- Optional dual tension controls
- Free-stand unit to fit all sewing heads and applications

#### DESCRIPTION

An electronically controlled metering system with stepping motor drive. This unit gives accurate repeatable size control. The unit is available with single or dual controls for intermittent metering.

#### OPERATION

The electronic control utilizes a synchronizer to activate the stepping motor driven metering head in unison with sewing speed. Tension settings are changed by the push of a button.

#### OPTIONS

Dual tension control for intermittent metering or multi-function metering settings.

**AP28M** Miniature electronic metering device (Lower Mount)

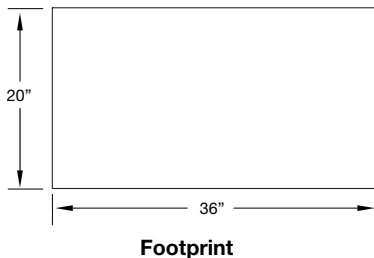
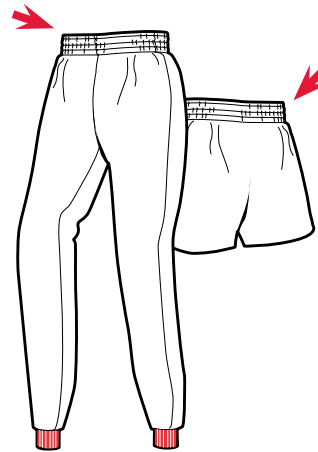
**ATC1** Close couple pneumatic scissor knife



Lower metering



Upper metering



#### SPECIFICATIONS

Voltage (v/ph/hz)	220v 1ph
Current (amps)	3

[www.atlatt.com](http://www.atlatt.com) • [sales@atlatt.com](mailto:sales@atlatt.com)

PATENTS: Our equipment may be covered by one or more patents. Please go to the following web page for an up-to-date patent list: [www.atlatt.com/patents.php](http://www.atlatt.com/patents.php)  
© 2018 Atlanta Attachment Co. 17168042718

362 Industrial Park Drive  
Lawrenceville, GA 30046 USA  
+1 (770) 963-7369 • FAX +1 (770) 963-7641



**Atlanta Attachment Company**

The Company that  
**Sudden Service**  
built