

Clean Finish Elastic Waistband Station

An electro-pneumatic clean finish waistband station consisting of a multi needle sewing machine*, motor, stand, spiral elastic guide (350-12), three blade rotary knife (for cut apart) and variable speed conveyor and metering device.

- Electric eye start
- Minimizes C.T.D. risk
- Improves quality
- Increases production
- Accurate sizing
- Reduce elastic waste
- Automatic cut apart
- Easy operation
- Minimize training
- Seams go through without hanging
- All industrial multi needle chain stitch machines. (Special gauge parts are available.)
- Sewing head provided by customer

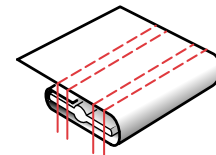
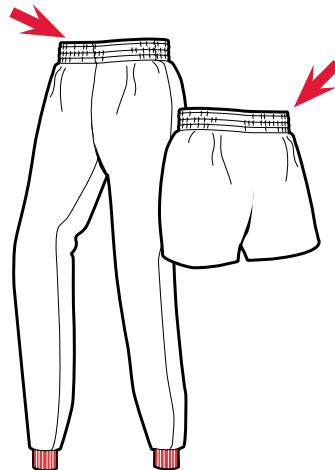
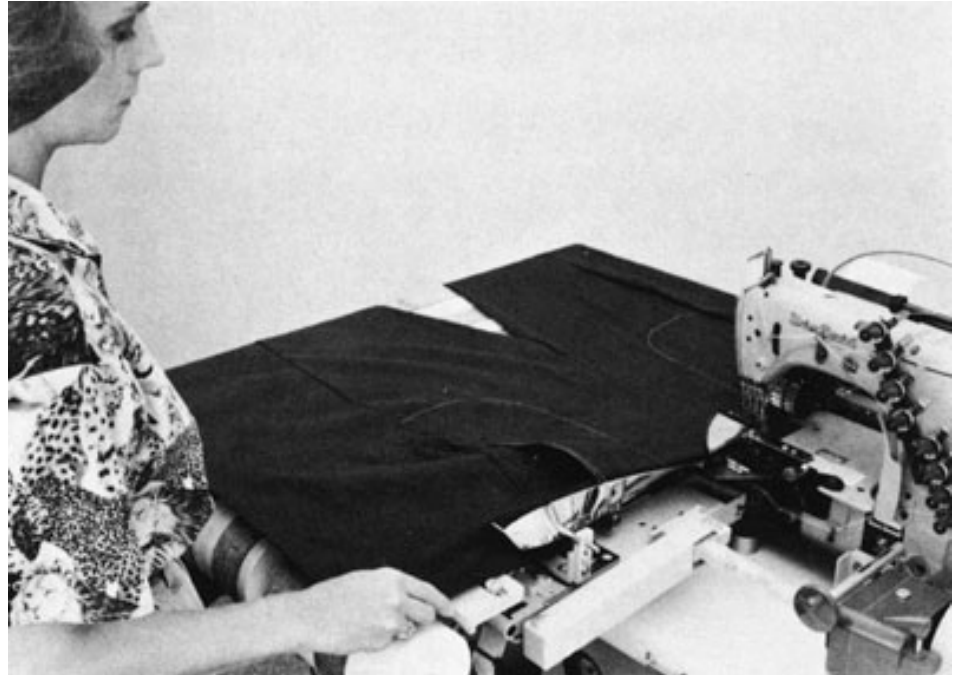
OPERATION

The operator presents the flat garment to the edge guide and into the spiral folder. An electric eye senses the leading edge and starts the sew cycle. The operator holds the garment against the edge guide until completely into the folder. The electric eye senses the trailing edge and stops the sew cycle leaving the proper spacing for the next garment to eliminate waste. The operator then picks up the next garment and repeats, the conveyor will carry pieces to the knife for automatic cut apart and then to the disposal area.

OPTIONS

Components may be purchased separately
 Spiral elastic guide and folder
 Variable speed metering device
 Three blade knife (cut apart)
 Conveyor stand length 40" (60" available)
 Thread break detectors
 Elastic detectors

Images may include options.



With or without quick cord

SPECIFICATIONS

Voltage (v/ph/hz)	220v 1ph
Current (amps)	5
Air pressure (psi)	90
Air consumption (cfm)	2

www.atlatt.com • sales@atlatt.com

PATENTS: Our equipment may be covered by one or more patents. Please go to the following web page for an up-to-date patent list: www.atlatt.com/patents.php
 © 2018 Atlanta Attachment Co. 17168042718

362 Industrial Park Drive
 Lawrenceville, GA 30046 USA
 +1 (770) 963-7369 • FAX +1 (770) 963-7641



Atlanta Attachment Company

The Company that
Sudden Service
 built